

**PRODUCT  
CATALOG**

**TMXFLOW**

**SKD  
VERTICAL AGITATOR**





## Application

The range of the SKD agitators present vertical direct motor-driven agitators.

These agitators are used in the processes of mixing, dissolution, dispersion and maintenance whenever powerful and high-speed agitation is required in the food, Processing, cosmetics, pharmaceutical or chemical industries.

The agitators are normally fitted to small volume tanks of up to 1.500 liters for work with low-viscosity products.

## Operation

The agitators are normally installed inside the tank either centrally with current deflectors or offsetting itself prevents the rotation of the stirred product. The rotation of the propeller makes the fluid flow to the bottom and then up to the surface of the product along the walls of the tank. The effect is promoted if the bottom of the tank is curved. Vigorously agitates the content of the tank promoting the mixing of the product while the sawtooth propeller promotes its dispersion.

## User Benefits

- Versatile, modular, hygienic design
- Can be configured for minimum energy consumption
- Gentle product treatment
- More uptime and higher yields due to low Maintenance



**Sawtooth Propeller**



**Flux Propeller**

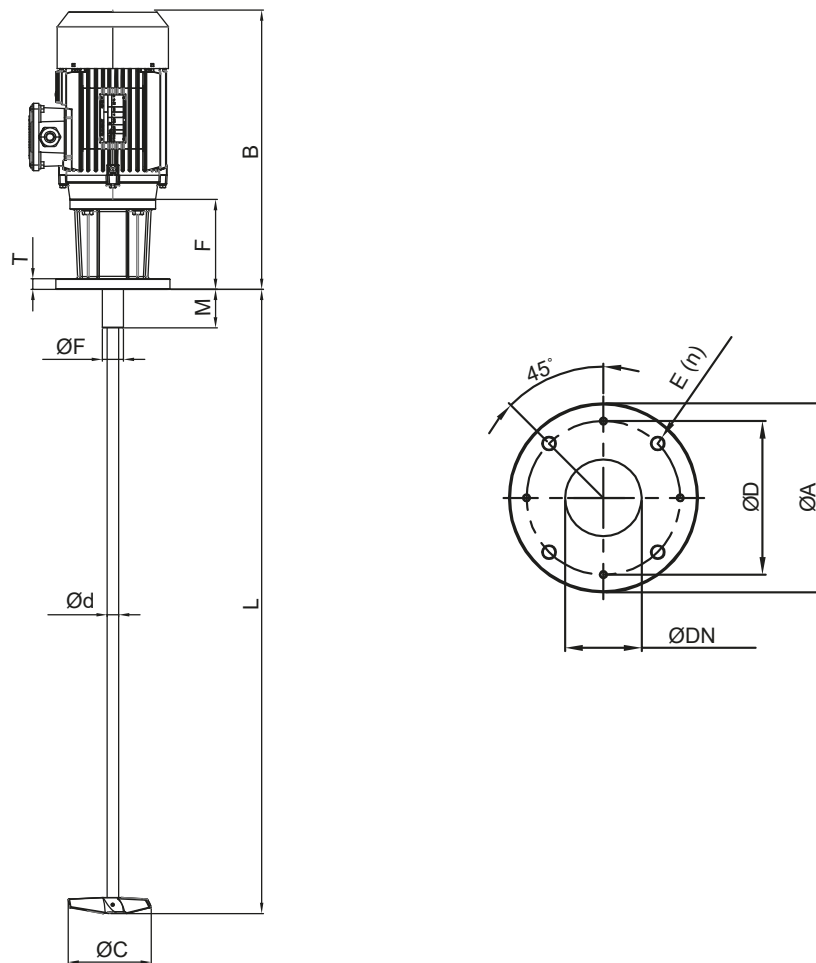
## Materials

Parts in contact with the product .....	AISI 316L
V-ring and retainer .....	NBR
Bearing support .....	Aluminum
Surface finish (except propeller) .....	Duplex Stainless Steel

## Options

- Saw tooth propeller. Welded propeller with  $ra < 0,5 \mu m$  surface finish.
- Motor shroud.
- Motors with other protections.
- ATEX motor.
- Sawtooth propeller
- Motors: 950 rpm or 1500 rpm.
- Pneumatic drive.

## Dimensions



Model	$\varnothing DN$	F	$\varnothing A$	L (max)	B	$\varnothing C$	$\varnothing d$	$\varnothing F$	M	$\varnothing D$	T	E (n)
SKD 15-005-130	65	130	160	1300	360	150	16	30	50	130	14	10,5 (4)
SKD 15-007-130	65	130	160	1300	360	130	16	30	50	130	14	10,5 (4)

## Selection Parameters

Type	Tank Capacity (m <sup>3</sup> )	Power (kw)	Speed (rpm)	Weight (kg)
SKP 10-005-130	0,1-0,7	0,55	900	17,0
SKP 15-007-130	0,2-0,8	0,75	1500	16,5