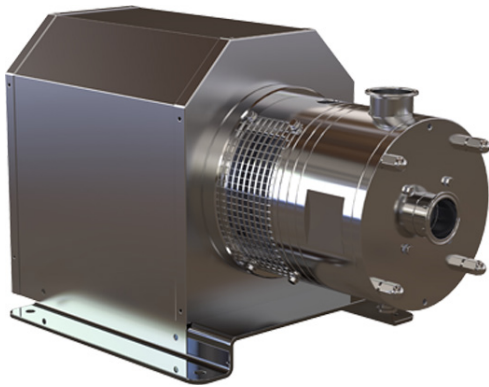


**PRODUCT
CATALOG**

TMXFLOW

***SDP
INLINE MIXERS***





Application

The casing is similar to a casing of a centrifugal pump, it houses the stator and the rotor. It is characterized by a high shear due to an adjusted tolerance between the rotor and stator.

The product is suctioned through the inlet and the rotor pushes it to the stator. Passing through the slots of the stator the product is mechanically sheared, the particles are sheared. If the viscosity of the product is higher than 200cP, it is recommended to put an auxiliary.

Operation

The casing is similar to a casing of a centrifugal pump, it houses the stator and the rotor. It is characterized by a high shear due to an adjusted tolerance between the rotor and stator.

The product is suctioned through the inlet and the rotor pushes it to the stator. Passing through the slots of the stator the product is mechanically sheared, the particles are sheared. If the viscosity of the product is higher than 200cP, it is recommended to put an auxiliary.

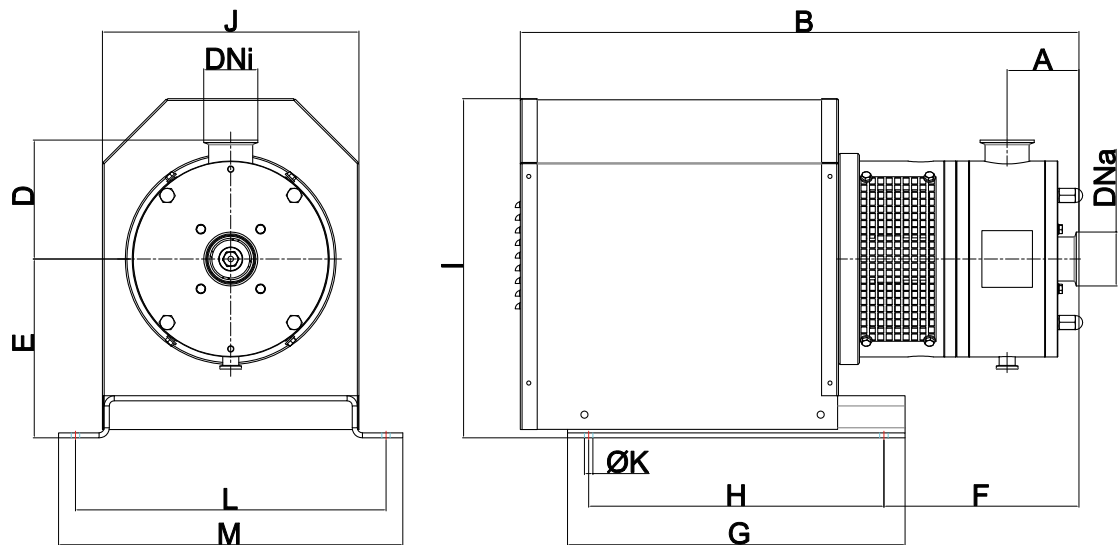
Options

Disintegrating head. Fine screen head.
Cooled or pressurised mechanical seal.
Connections: DIN 11851, SMS, flanges, etc:
Baseplate with antivibration legs.
Trolley with/without control panel.
Mirror polish $Ra \leq 0.5 \mu m$ for the pharmaceutical applications.
Other motor protections.

User Benefits

Fast and homogenous powder dissolving
A combination of a stationary inline
Powder-liquid mixer and a pump
High dynamic shear, gentle mixing easy maintenance
Reduced installation, emissions, energy and maintenance costs.
Reduced total cost ownership
Combining the functions of
Powder mixing and pumping into a single unit

Configurations



Dimensions

TYPE	DNA	DNI	A	B	D	E	F	G	H	I	J	K	L	M
SDP 30-011	1 1/2"	1 1/2"	70	595	114	175	190	230	325	355	290	15	245	285
SDP 30-040	2	2	86	700	140	232	256	300	400	445	350	19	355	410
SDP 30-075	2 1/2"	2 1/2"	86	850	140	252	253	350	450	490	400	19	355	410
SDP 30-185	3	2 1/2"	98	1080	175	310	227	600	700	615	500	19	465	520
SDP 15-220	4	3	109	1115	204	310	269	600	700	615	500	19	465	520

Capacity

TYPE	Flow(m³/h)	Power(kw)	Speed(rpm)
SDP 30-011	10	1,1	3000
SDP 30-040	20	4	3000
SDP 30-075	30	7,5	3000
SDP 30-185	35	18,5	3000
SDP 15-220	45	22	1500